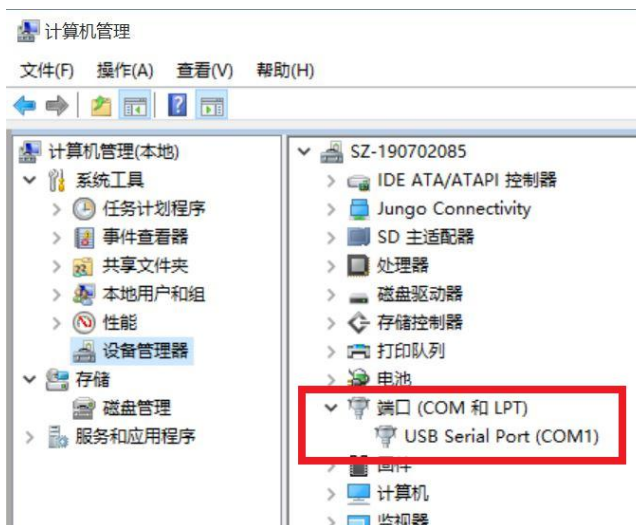
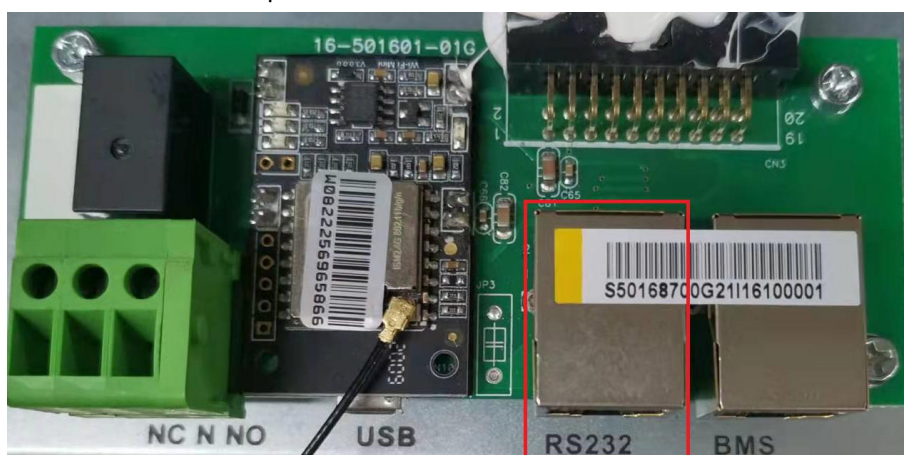


WP LV 6KW upgraded Firmware SOP

V2.0

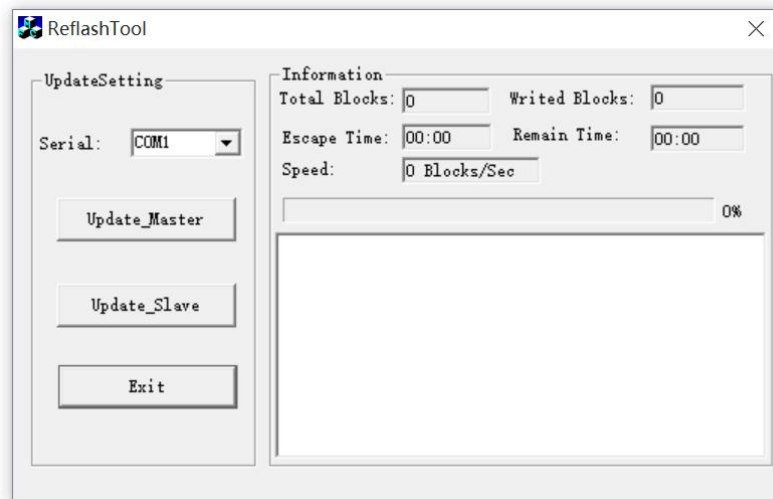
1. Make sure all of software is close, such as SolarPower.
2. Startup WP LV 6KW by battery or Grid(**Never use PV**), then use RS232 cable connect PC and the com port of Infini-solar WP LV 6KW which as below.
 - (1) At this step, LCD should be light.
 - (2) Ensure that the serial port number is smaller than COM10



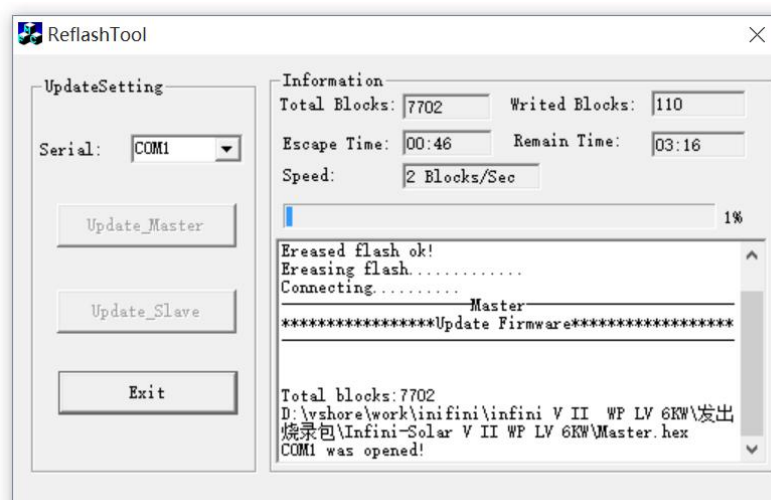
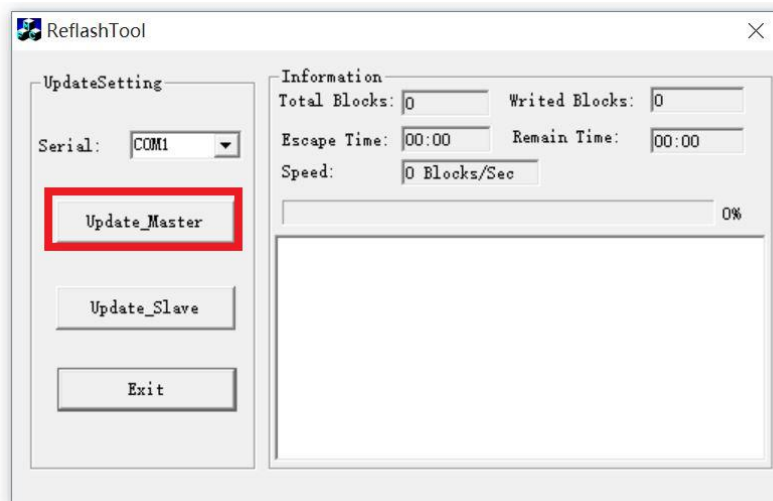
3. Decompress the package of upgraded tool and startup "ReflashTool_Infini-solar.exe".

 **ReflashTool_Infini-solar.exe**

4. The system will show a dialog as below.



5. Shut down machine output. Then press "Update_Master" button, upgrading will begin.



6. After few minutes, the process will be finished.

